



JABRA SCREEN LOCK APP ON-SCREEN DATA PROTECTION

Jabra Screen Lock is a desktop software application that discreetly locks your PC screen hiding sensitive data away from visitors to your desk or office. As simple as it sounds, just unplug your Jabra headset from its inline controller for discreet on screen peace of mind.

HOW IT WORKS

Jabra Screen Lock takes advantage of Jabra Intelligent Technology (Communications Centric Contextual Intelligence) to trigger a 'lock action' of the PC in a considerate manner. Unplug your Jabra headset from the inline controller and your screen discreetly locks hiding away sensitive on screen data.

SCREEN SAVER, SCREEN LOCK AND LIVE CALLS/AUDIO

Screens can be locked whilst on a call, listening to music or other audio applications without interrupting the audio. Users can continue on a call even when the screen is locking by simply replugging the headset back into the inline controller after the lock action is initiated. Calls and audio will be interrupted if you choose sleep or hibernate options in the settings menu.

SCREEN LOCK AND DIRECT, JABRA INTELLIGENT CALL TRANSFER AND XPRESS.

Screen lock is a standalone application that can be used concurrently with Intelligent Call Transfer and Jabra Direct. Screen Lock is not supported by Jabra Xpress at this time.

COMPATIBILITY

Jabra Screen Lock provides screen locking with: Jabra Evolve 40, Evolve 80, Link 230, and Link 260 USB enabler products. Jabra Screen Lock is available for the PC running Windows 7 and Windows 8. Screen Lock needs the .NET framework 4.0 and above. Jabra Screen Lock needs the latest firmware running on the above devices. Use Jabra Direct to ensure that you are using the latest firmware should Jabra Screen Lock not work with your device.

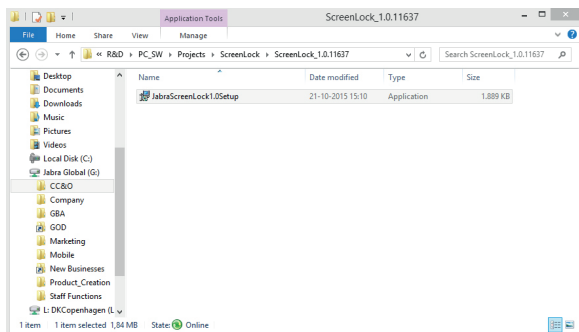
CHOOSE YOUR LOCK ACTION

Jabra Screen Lock can be configured to: Screen Lock, Screen Saver, Sleep or Hibernate your PC. It can also be programmed to lock immediately or apply a 15 seconds delay for even more discretion on screen locking in front of colleagues and associates. Jabra Screen lock is all about discretion and security, and thus does not report any activity to a server anywhere and does not automatically update itself. It is totally standalone, and totally in your control.



INSTALLATION

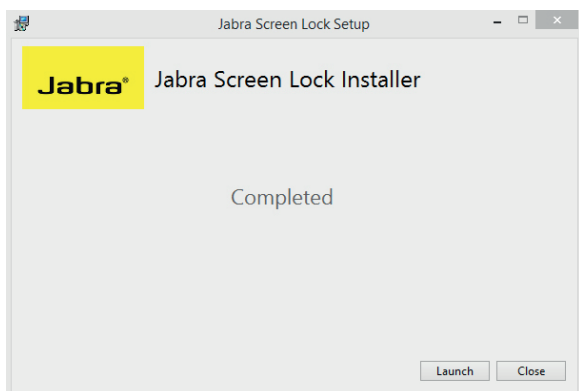
Jabra Screen Lock can be downloaded from www.jabra.com/getscreenlock
 The file is a .exe and can be installed by an individual or pushed out via popular IT tools. On first time run, and individual downloads the user will need to agree to the EULA before installation begins.



APPLICATION FORMAT



JABRRA EULA

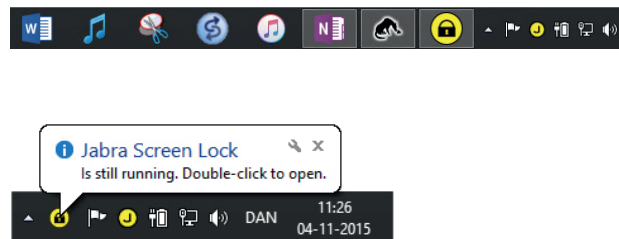


SUCCESSFUL INSTALLATION SCREEN

After the successful installation screen is displayed, Screen lock will be installed. Click on the 'Launch' button to start application. No system reboot needed.

GETTING TO KNOW JABRA SCREEN LOCK

Screen Lock follows standard Windows application protocols of minimization, window closing, taskbar display, starting on Windows, restarting and exit.

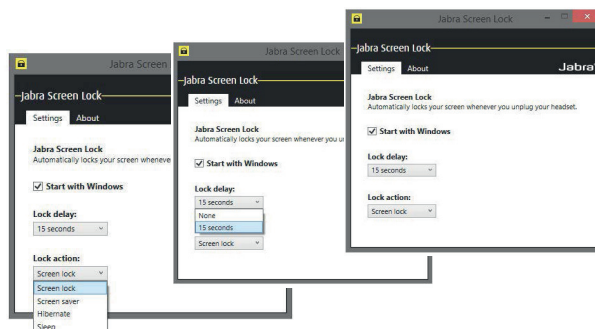


And follows the standard Windows protocols for displaying in the task bar. All Screen Lock Windows can be moved and placed at the users convenience and the application will restore to those positions after minimization and maximization. The 'Delay Window' can also be moved to a position of the users choice. The default settings for Screen Lock are 'Lock Immediately' and 'Screen Lock'.

SETTINGS

Jabra Screen lock has only three settings, making it very simple to use:

- 1- To start the application when Windows starts
- 2- To lock immediately or after a 15 second delay
- 3- To select the type of lock action the user requires. Lock actions are Screen Lock (Default), Screen Saver, Hibernate and Sleep



KNOWN ISSUES / FAQ

Do I have to pay anything to get it?

Free of charge, no royalties, no donations!

Where do i get it from?

<http://developer.jabra.com/screenlock>

Does Screen Lock gather any statistics and store them or use the cloud?

No, Screen Lock does not collect any statistics or use a network connection, it is a standalone application. Future versions may support statistic reporting.

Is Screen Lock supported by Direct and Xpress?

Screen Lock is a standalone application that can co-work with Jabra Direct & Xpress. It will be fully supported by Direct & Xpress in 2016.

How will Screen Lock be updated?

Screen Lock does not use an automatic updater, so revision management must be managed and re-deployed by end users or IT managers. Future versions may support automatic updates.

What operating systems are supported?

This version supports Windows 7 and Windows 8. Future versions may support other operating systems.

Can Screen Lock support other devices?

No, this version of Screen Lock only supports Evolve 40, Evolve 80, Link 230 and Link 260 devices. Future versions may support other devices

My Evolve 40 and Evolve 80 don't lock?

Check you have the latest firmware via Jabra's Firmware Updater application. This can be done by using Jabra Direct software downloadable from http://www.jabra.com/products/software_and_services/jabra_software/jabra_direct

My Evolve 40 and Evolve 80 sometimes stop locking?

Windows power management schemes can sometimes power down the inline controller, especially when using a laptop in battery mode. Wake up the inline controller by pressing the call/answer/end button then disconnect the headset

ABOUT JABRA SCREEN LOCK

The 'About' screen informs the user of the current revision of Screen Lock and displays if you have a compatible Screen Lock device.

